

EXCLUSIVE >> STRAIGHT FROM JAPAN >> MINE'S NISSAN GT-R



# Performance AUTO & SOUND

MAG.COM

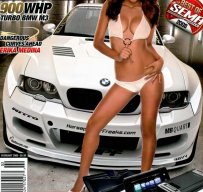
## WHITE HEAT

### 900 WHP

TURBO BMW M3



DANGEROUS  
CONTROL ARM  
CRACK MEDINA



Volume 12 Issue 10

TEST REPORT  
MAYHEM!



DRIVER  
CONTROL SYSTEM



CLAREN  
CONTROL SYSTEM



ARMOUR  
CONTROL SYSTEM

**EVENTS**

**020 SEMA SHOW COVERAGE**  
November 17-21, 2008 | Las Vegas Convention Center | Las Vegas, NV

**102 DR DRUG RACING FINALS**  
October 17-19, 2008 | Bristol Motor Speedway

**110 CSPL FINALS**  
September 22, 2008 | Ontario International Speedway | Ontario, Canada

**114 USAC WORLD FINALS**  
November 21-23, 2008 | Texas Motor Speedway | Dallas, TX

**172 RED BULL DRIFTING WORLD CHAMPIONSHIP**  
November 21-23, 2008 | Texas Motor Speedway | Dallas, TX

**188 SEMA: EDITOR'S TOP PICKS**  
November 17-21, 2008 | Las Vegas Convention Center | Las Vegas, NV



**FREAK SHOW 030**  
2008 SEMA 102

**FEATURES**

**094 SPEED OF SOUND**  
2008 October 2007

**118 BIRD CONGRU**  
Featuring the 6000 Series

**124 MORE THAN MEETS THE EAR**  
2007 November 2007

**128 GAMING FACE**  
2008 November 2008

**132 KISS FOR THE MACHINE**  
2008 November 2008

**138 KEYS TO THE VIP**  
2008 November 2008

**166 INSIDE MYNEX**  
2008 November 2008

**178 LADY'S CHOICE**  
2008 November 2008

**182 THE SHOCKER**  
2008 November 2008



**I**n the world of poker you better come correct with a good game face. Really in any sort of competition or negotiation you need that intimidation factor to make a bold statement and really let people know you mean business.

Boulevard (BLVD) Customs of St. Petersburg, FL know all too well about making bold statements, as their clientele, craftsmanship and creations easily speak for themselves. We've featured a number of their impressive builds in our magazine before, as the talented team at BLVD have a number of hot projects under their belt. So when they were invited to participate in a design contest for Mercedes-Benz USA, BLVD stepped up to the plate—and the Urban Whip was born. "I've been a Mercedes fan since childhood," says Boulevard President Chris Bradley, "I reviewed the design brief for the Urban Whip and I said to myself, 'we can do this better than anyone else.' There would be four players in the design contest and Boulevard was ready to go all out with a level of custom craftsmanship that the others simply couldn't touch. Obviously the most dramatic feature of the BLVD GLK design is its roadster design. Along with the drop top theme, the windshield was chopped to give the feel of a classic open motor car with seats for four very lucky passengers.

Erk Homen of Robrady Design in Sarasota, FL took Boulevard's original sketch design by Chris Bradley and transformed the aggressive widebody kit into a 3-dimensional computer rendering. The design sketches were given the green light by Mercedes' top brass and it fell within their requirements for structural integrity and practical mooring. Once given the nod, the renderings were brought to life using Robrady's 5-axis router to create the custom 3-inch widebody kit.

The roof removal, reinforcement and metal work reshaping duties fell to NBS Performance of Pinellas Park, FL. Reinforcing the roof of a 5-star crash rated vehicle like the GLK meant extra bracing would have to be added to the sides and underbelly of the vehicle. All glass was removed for roof removal by Rich Granley (without breaking any) before C-Thru Glass in Odessa, FL carefully cut down 3.6-inches off the front windshield to match the chopped-down A-pillars for a real roadster look. Then off to Superior Auto Body also in Pinellas Park, FL where Ed Weiss did the painstaking task of molding the front and rear bumpers into the body before Matt Falter repainted the vehicle. The factory grill opening was widened and the struts at Strut handcrafted something special to make this GLK ride really shine. Art Craft Plating chrome dipped all of the square tubing found on the exterior. The front driving light's halogen bulbs were replaced with 10-watt LED bulbs for better performance, while smoked treatment brings distinctive style to the rear light cluster. To get the true badboy stance, the GLK has been slammed by 2.5-inches all around with a custom suspension. Boulevard knew that they would have to shoehorn in some mind-bending wheels to get neck-snapping attention and they did just that. The BLVD Urban Whip is grounded to the asphalt with impressive 26-inch Asanti AF-150 chromes with custom black accents. These rare wheels are wrapped in 295/25R26 Pirelli Scorpion rubber for a smooth and stable ride. Boulevard also knows that with wheels that size, you need more brake, so BLVD slipped on some Brembo GTs with 8-piston calipers and 15-inch rotors on the front and 4-piston rears with a 13.6-inch rotor. JL's Auto Interiors hooked up the striking interior upholstery blend of both diamond-stitched and perforated AMG leathers. Both front and rear seats receive the same treatment equating to a truly luxurious 2+2 driving experience. The rear seating area was treated to a pair of custom fabricated bucket seats and a unique center console matching the original front console built by Inner Works.



# GAIN





# MEFACE

Text by Dave Parkew // Photos by Mercedes-Benz USA



# GAMEFACE

out of St. Petersburg, FL. The team added piano black wood trim, a custom steering wheel and custom shift knob to result in an interior that pays homage to Mercedes upscale models while giving the GLK its own identity. Any OEM interior parts requiring replacement were color matched to perfection by Gulf Coast Vinyl Repair.

The real work started with the audio and multimedia roll out. If you really want to get noticed, you gotta be loud! Maintaining the factory Mercedes Command unit, the team went on to ramp up the balance of the audio with high-end components. The signals are fed to the JL Audio Cleanweep and SSI summing device for proper processing and tuning. Beyond that there are six JL Audio HD750/1 power amps driving six individual JL Audio 13TW5 subwoofers. A pair of JL Audio HD600/4 amps were selected to power the JL Audio 6.5-inch ZR components in the front and 5.25-inch ZR components in the rear. The motorized dual-stage hinge mechanism was designed and built by BLVD Customs. Sparking up the sounds is some gear from AAMP of America, consisting of four impressive Stinger SP900 batteries with a Stinger SP1700 powering the SUV itself. The power wire, speaker wire, distribution blocks, fusing and sound deadening, are all top notch. Stinger competition grade gear. When the Urban Whip GLK made it to SEMA, it was clear this \$150,000 build was far ahead of what the competition had been up to. So radical and well-crafted, the BLVD Customs crew was voted number one in our opinion. In our experience with these talented Florida builders, we really expected nothing less. Full credit goes to the talented team at BLVD, especially Chris Bradley (overall design), 'Spice' Kester (build coordinator), Danny Carracho, Ryan Pepsin and Dave Ridenour (fabrication and installation of stereo system, interior, wheels and brakes), Katry Bradley, Zach Abass and Cory Jansen. BLVD would like to thank Rebrady Design, NDS Performance, Superior Auto Body, Inner Works, JL's Auto Interiors, C-Tint, Glass and Security Films, Gulf Coast Vinyl Repair and Aircraft Plating who dedicated their time, skill and creativity to the build. For a behind the scenes look at the incredible BLVD Customs GLK build process, be sure to check out its transformation on [www.blvdcustoms.com](http://www.blvdcustoms.com)

**PBS**



## HOUSE OF BOOM

If you really want to get noticed, you gotta be loud! There are six JL Audio 750/1 power amps driving six individual 13.5-inch hinge mechanism was designed and built by BLVD Customs.

**OWNER:** BOULEVARD CUSTOMS  
**LOCATION:** ST. PETERSBURG, FL  
**VEHICLE:** 2010 MERCEDES  
BENZ GLK

### ENGINE:

Mercedes 3.5L V6

### INTERIOR:

Black & White diamond-stitched and perforated leather.  
Custom 2+2 bucket seats  
Piano black wood trim  
Custom steering wheel, shift knob and center console

### WHEELS, TIRES, BRAKES:

Aesoni AF 150 25x10-inch  
Pirelli Scorpion 295/25R26 tires  
Brembo GT 8-piston 15-inch front brakes  
Brembo GT 4-piston 13.6-inch rear brakes

### AUDIO & MULTIMEDIA:

SSI Summing Device  
JL Audio Cleanweep  
JL Audio HD750/1  
JL Audio HD600/4  
JL Audio 13TW5 13.5-inch subwoofers x6  
JL Audio ZR650 CS1 6.5-inch components  
JL Audio ZR225 CS1 5.25-inch components  
Stinger SP900 batteries x4  
Stinger SP1700 powering  
Stinger power wire, distribution blocks,  
sound deadening and speaker wire

